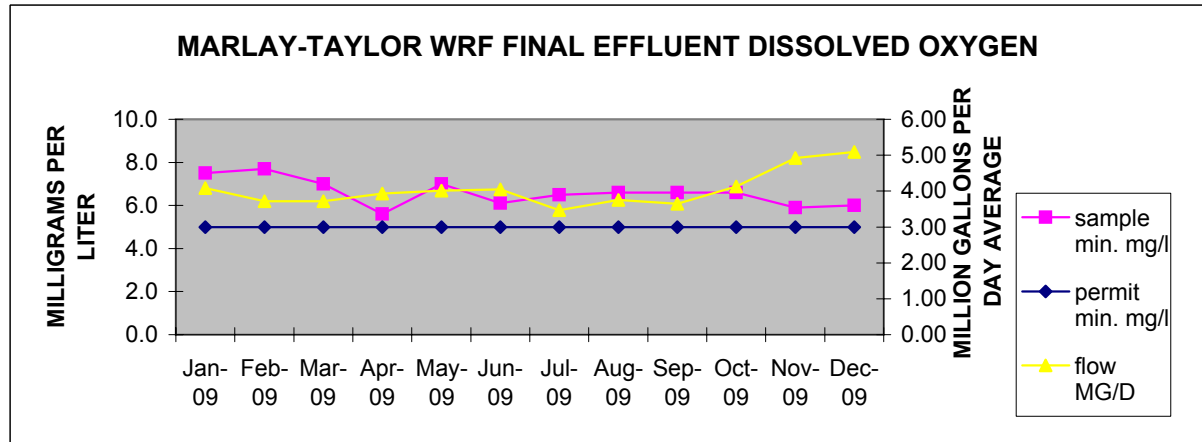


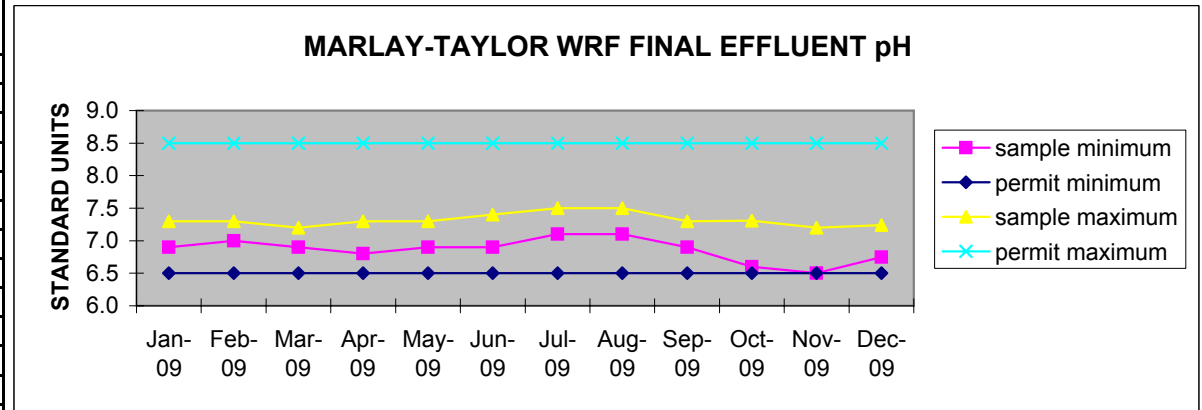
Marlay-Taylor WRF
Final Effluent Dissolved Oxygen

	sample min.mg/l	permit min. mg/l	flow MGD average
Jan-09	7.5	5.0	4.08
Feb-09	7.7	5.0	3.72
Mar-09	7.0	5.0	3.72
Apr-09	5.6	5.0	3.93
May-09	7.0	5.0	4.01
Jun-09	6.1	5.0	4.05
Jul-09	6.5	5.0	3.47
Aug-09	6.6	5.0	3.75
Sep-09	6.6	5.0	3.65
Oct-09	6.6	5.0	4.13
Nov-09	5.9	5.0	4.92
Dec-09	6.0	5.0	5.09



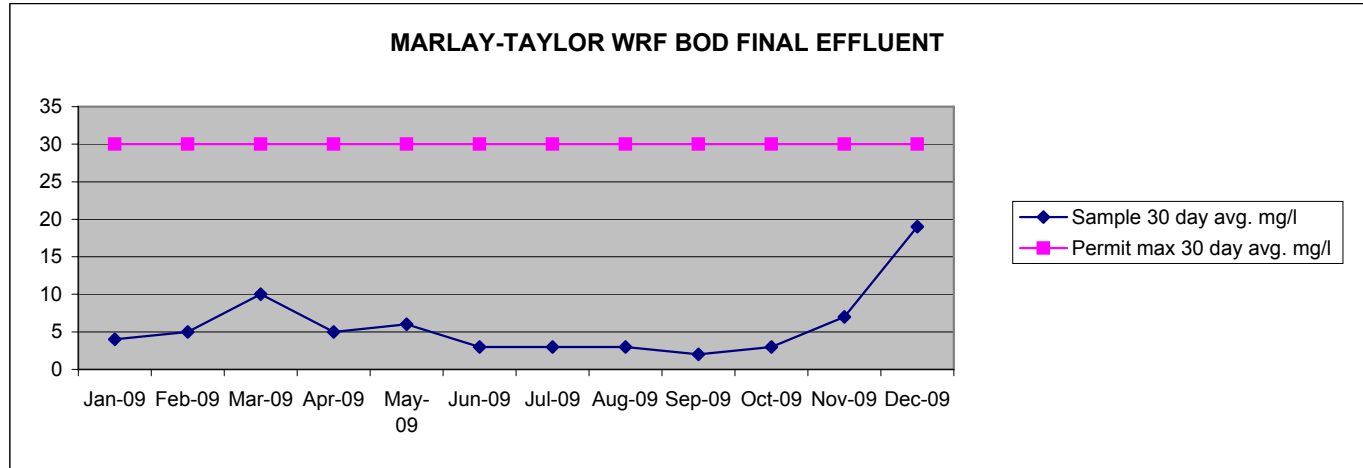
Final Effluent pH

	sample min.	permit min.	sample max.	permit max.
Jan-09	6.9	6.5	7.3	8.5
Feb-09	7.0	6.5	7.3	8.5
Mar-09	6.9	6.5	7.2	8.5
Apr-09	6.8	6.5	7.3	8.5
May-09	6.9	6.5	7.3	8.5
Jun-09	6.9	6.5	7.4	8.5
Jul-09	7.1	6.5	7.5	8.5
Aug-09	7.1	6.5	7.5	8.5
Sep-09	6.9	6.5	7.3	8.5
Oct-09	6.6	6.5	7.3	8.5
Nov-09	6.5	6.5	7.2	8.5
Dec-09	6.8	6.5	7.2	8.5



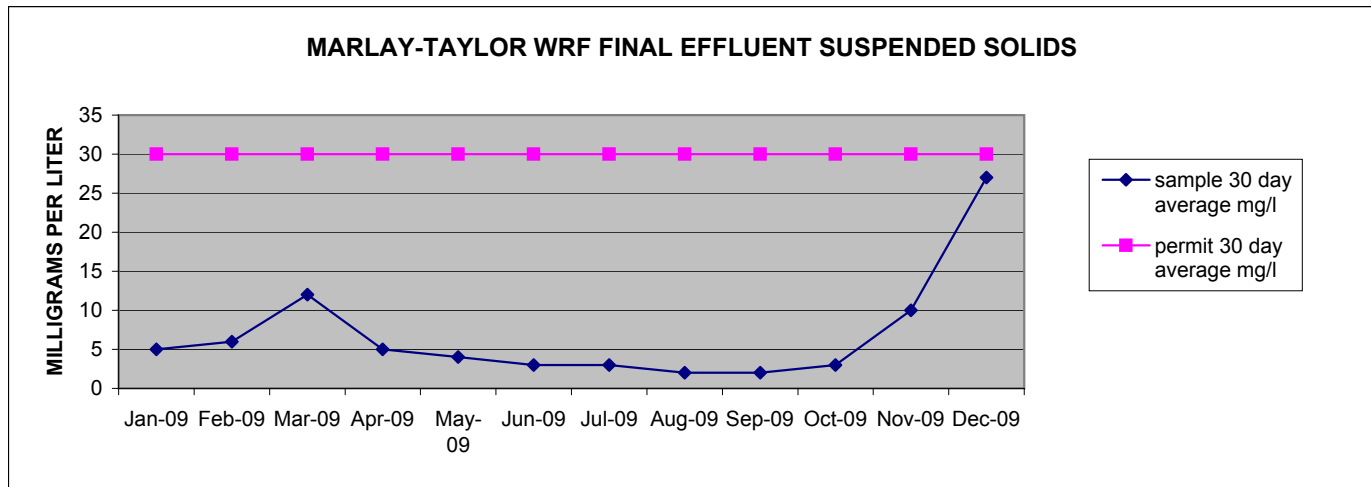
Final Effluent BOD

	sample 30 day average mg/l	permit 30 day average mg/l
Jan-09	4	30
Feb-09	5	30
Mar-09	10	30
Apr-09	5	30
May-09	6	30
Jun-09	3	30
Jul-09	3	30
Aug-09	3	30
Sep-09	2	30
Oct-09	3	30
Nov-09	7	30
Dec-09	19	30



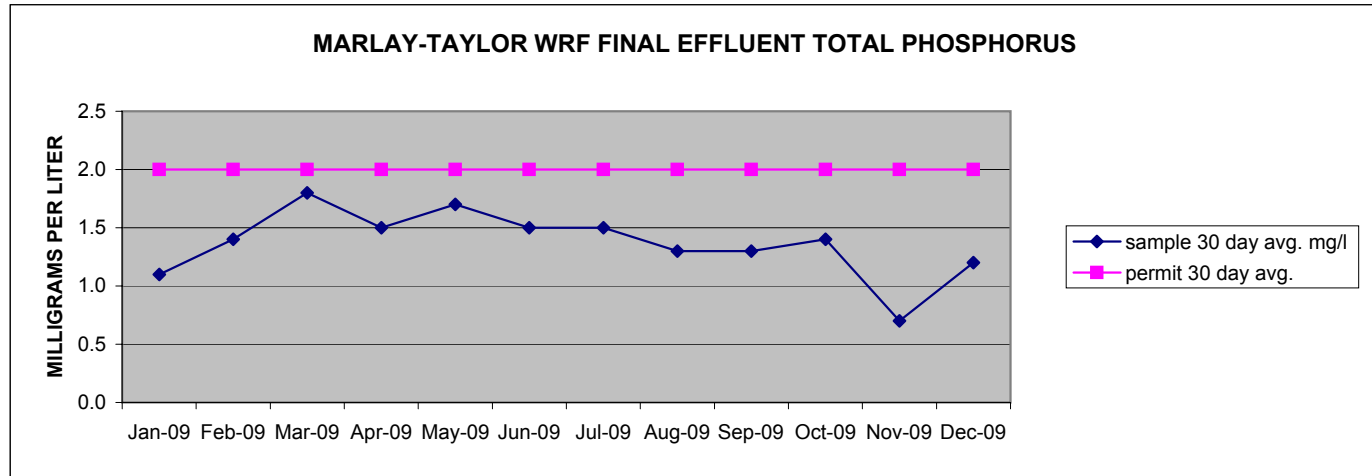
Final Effluent Total Suspended Solids

	sample 30 day average mg/l	permit 30 day average mg/l
Jan-09	5	30
Feb-09	6	30
Mar-09	12	30
Apr-09	5	30
May-09	4	30
Jun-09	3	30
Jul-09	3	30
Aug-09	2	30
Sep-09	2	30
Oct-09	3	30
Nov-09	10	30
Dec-09	27	30



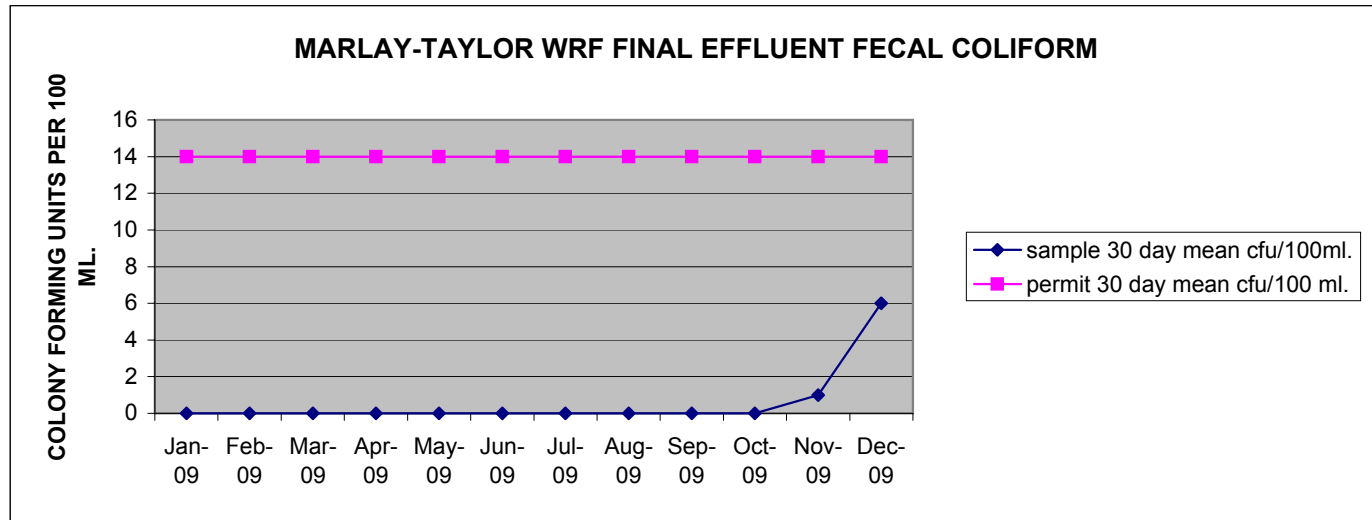
Final Effluent Total Phosphorus

	sample 30 day average	permit 30 day average
Jan-09	1.1	2.0
Feb-09	1.4	2.0
Mar-09	1.8	2.0
Apr-09	1.5	2.0
May-09	1.7	2.0
Jun-09	1.5	2.0
Jul-09	1.5	2.0
Aug-09	1.3	2.0
Sep-09	1.3	2.0
Oct-09	1.4	2.0
Nov-09	0.7	2.0
Dec-09	1.2	2.0



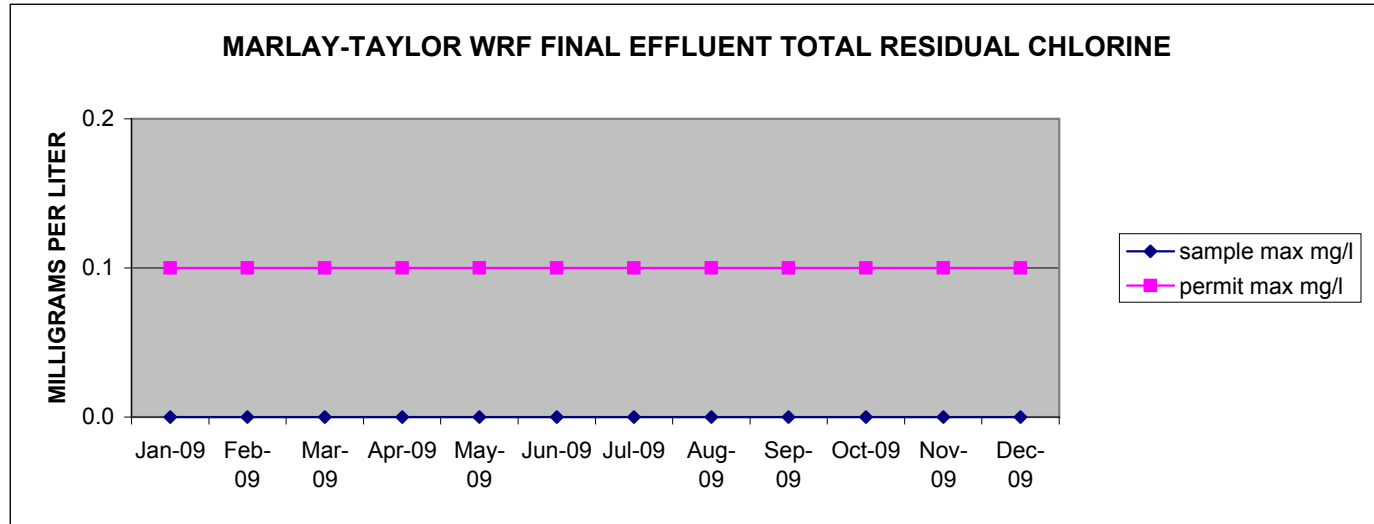
Fecal Coliform

	sample 30 day mean cfu / 100 ml	permit 30 day mean cfu / 100 ml
Jan-09	0	14
Feb-09	0	14
Mar-09	0	14
Apr-09	0	14
May-09	0	14
Jun-09	0	14
Jul-09	0	14
Aug-09	0	14
Sep-09	0	14
Oct-09	0	14
Nov-09	1	14
Dec-09	6	14



Total Residual Chlorine Final Effluent

	sample max mg/l	permit max mg/l
Jan-09	0.0	0.1
Feb-09	0.0	0.1
Mar-09	0.0	0.1
Apr-09	0.0	0.1
May-09	0.0	0.1
Jun-09	0.0	0.1
Jul-09	0.0	0.1
Aug-09	0.0	0.1
Sep-09	0.0	0.1
Oct-09	0.0	0.1
Nov-09	0.0	0.1
Dec-09	0.0	0.1



Total Nitrogen Final effluent

	sample 30 day average
Jan-09	8.4
Feb-09	7.2
Mar-09	8.9
Apr-09	5.8
May-09	5.6
Jun-09	7.2
Jul-09	8.7
Aug-09	6.3
Sep-09	7.2
Oct-09	7.6
Nov-09	9.9
Dec-09	7.6

