

WALL MIU BRACKET

General

1. This standard is for radio read conversions only.
2. See Neptune Technology Group R900 MIU Installation manual for additional information.
3. For vault installations also see Standard W-4A/4B, W-5, W-6 or W-17 as applicable.
4. Neptune Wall Mount R900 is the MIU device for converting Sensus Touch Pad meters that are interior meter locations. The Wall Mount R900 replaces the exterior mounted touch pad device. Access to the Sensus meter register is required.

Radio Read MIU Location

1. The MIU shall be located in direct replacement of the Sensus Touch Pad when ever possible. The MIU should be elevated above any metal obstructions or fencing that is in the line of sight to the street
2. For vault or pit installations see W-17.
3. MUI shall be located in close proximity and at the same height as the electric meter base, but not more than three feet from the meter base.
4. Touch pad shall be located a minimum of three but not more than five and one half feet above the finished grade elevation.
5. The MIU shall be securely fastened to the structure with appropriate fasteners.
6. Weather-tight seals shall be provided for all penetrations existing, created or abandoned.

Wiring, General

1. Cabling between the Sensus ECR register and the Neptune MIU shall be as a minimum solid conductor, three wire 22 awg vinyl jacketed. The Metcom Engineer shall approve conductor size for cable lengths exceeding 200 feet. Conductor colors to be Red, Green and Black.
2. Cable shall be continuous with no splices except at the MIU lead.
3. The MIU lead shall not be cut shorter then 18 inches.
4. The MIU lead to cable splice shall be accomplished only with "direct burial water submersion" industrial quality connection and shall maintain the conductor color.
5. Route cable to and from the electronic communication register (ECR) by following the current cable. After terminations are complete a minimum of 18 inches of cable for future needs shall be available at both the MIU and the Register. Excess cable shall be neatly coiled, secured and other wise controlled to provide a neat and professional installation.
6. Stripping of cable jacket shall not harm the underlining conductor or it's insulation in any way. Exposed conductor insulation shall not exceed 1/2 inch.
7. Terminal connections shall be made by bending appropriate sized loops that provide sufficient mechanical and electrical contact. The conductor shall loop the terminal screw a minimum of 270 degrees. Exposed conductor shall not exceed 1/8 inch beyond the terminal screw.
8. The register terminal cap shall be removed and re-installed such that it provides the manufacture's level of protection and security.

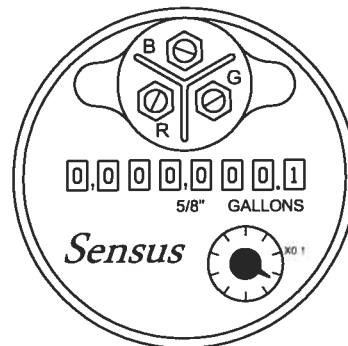
The MIU to ECR Register Wiring

1. When the MIU lead wires are to be terminated on Sensus register terminals, use the following color code.

MUI Conductor Color	Sensus Terminal
Black	R
Green	B
Red	G

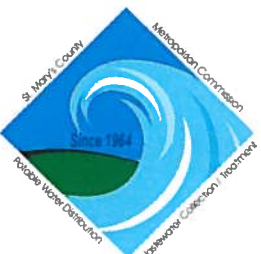

2. When the MIU lead wires are to be spliced to the Sensus touch pad wiring harness, use the following color code.

MUI Conductor Color	Sensus Touch Pad Conductor Colors
Black	Red
Green	Black
Red	Green



TOP VIEW

ELECTRONIC COMMUNICATION REGISTER

	APPROVED	REVISIONS		ST. MARY'S COUNTY METROPOLITAN COMMISSION STANDARDS FOR PUBLIC WATER, SEWER AND INCIDENTAL STRUCTURES
	 DAVID J. ELBERTI, P.E. CHIEF ENGINEER DATE: 7/20/11	DATE	INITIALS	
		7/19/11	JEC	
		STANDARD NO. W-11		