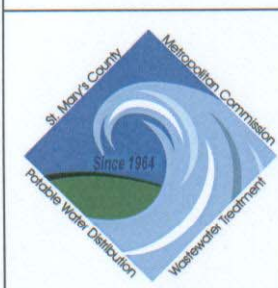
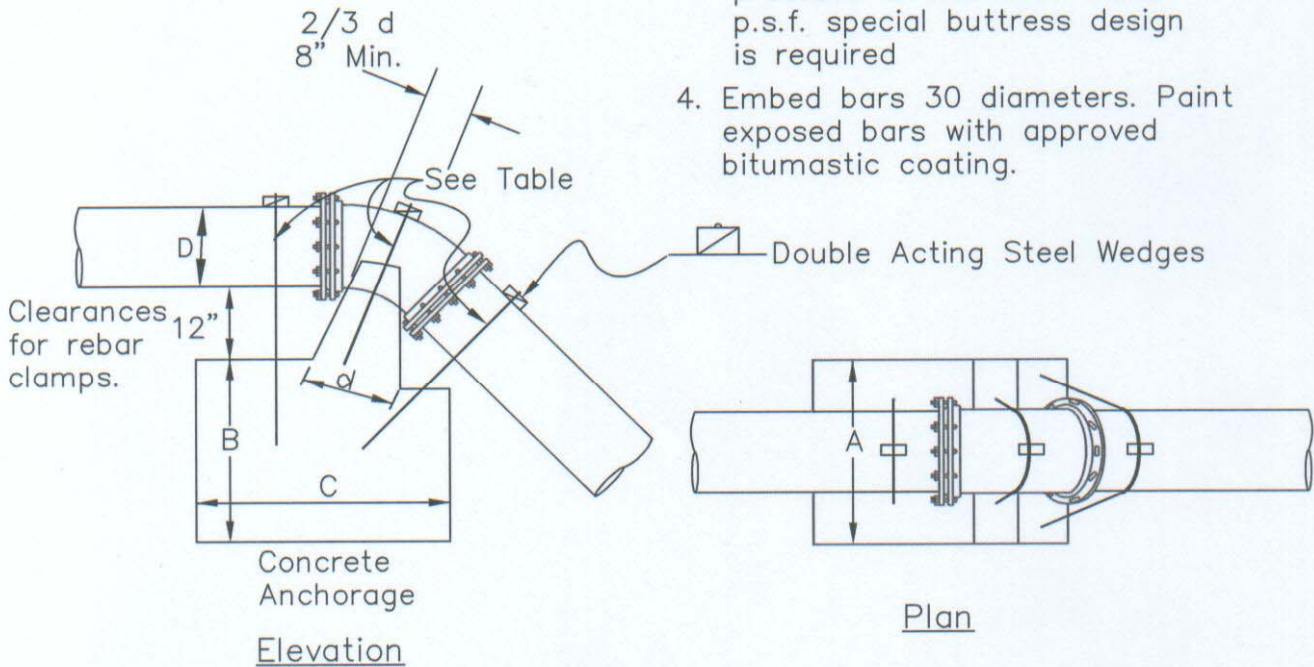


Anchorages For Vertical Bends						
D		Size				
		6"	8"	10"	12"	16"
1/32	A	6"	8"	10"	1'-0"	1'-4"
	B	7"	8"	9"	10"	1'-0"
	C	7"	7"	8"	8"	9"
1/16	A	9"	1'-0"	1'-6"	1'-9"	2'-3"
	B	7"	7"	8"	10"	1'-0"
	C	7"	7"	8"	8"	9"
1/8	A	1'-3"	1'-8"	2'-1"	2'-6"	3'-4"
	B	7"	8"	9"	11"	1'-3"
	C	7"	8"	10"	11"	1'-3"

Size	Reinforcing Bars		
	1/32	1/16	1/8
6"	3@6"	3@6"	3@6"
8"	3@6"	3@6"	3@6"
10"	3@6"	3@6"	3@6"
12"	3@6"	3@6"	3@6"
16"	3@6"	3@6"	3@6"

Notes:

1. All concrete to be MDOT SHA mix #1. (2500 psi)
2. Buttress dimensions shown are minimum and are based upon soil bearing pressure of 3000 p.s.f. and static water pressure of 150 p.s.i.
3. Where pressure exceeds 150 p.s.i. or where soil bearing pressure is less than 3000 p.s.f. special buttress design is required
4. Embed bars 30 diameters. Paint exposed bars with approved bitumastic coating.



APPROVED

C. I. Frederick Jr.

C. I. FREDERICK JR., P.E.
CHIEF ENGINEER

DATE: 7/1/09

REVISIONS

DATE	INITIALS
6/18/09	J.E.C.

6/18/09

J.E.C.

ST. MARY'S COUNTY
METROPOLITAN COMMISSION
STANDARDS FOR PUBLIC WATER, SEWER
AND INCIDENTAL STRUCTURES

ANCHORAGES FOR
VERTICAL BENDS

STANDARD NO. G-4