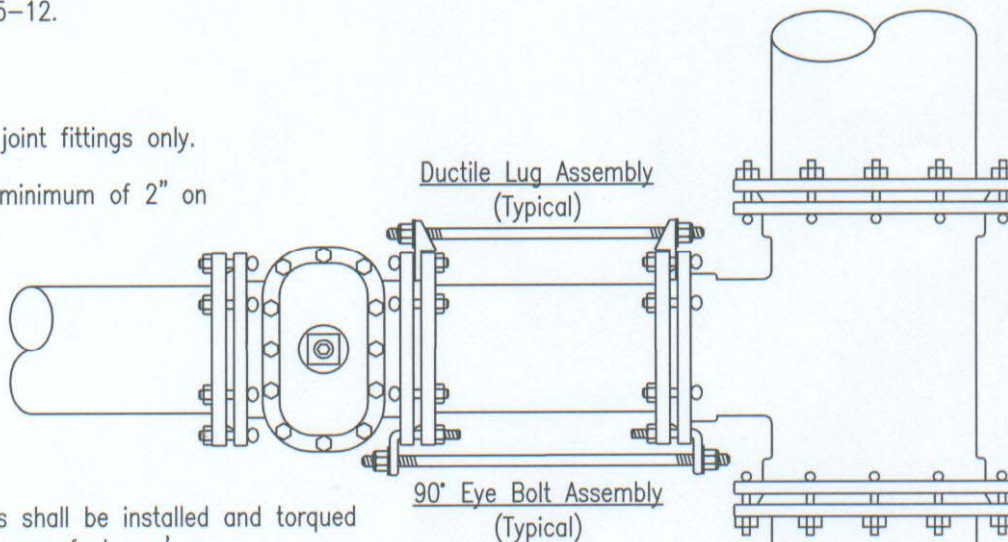


Ductile Lug
 Placed between flange and fitting body.
 Material: Ductile iron per ASTM A 536,
 Grade 65-45-12.

For use on mechanical joint fittings only.

3/4" Dia. bar threaded a minimum of 2" on each end or All-thread.

Bars to be coated with bituminous compound.

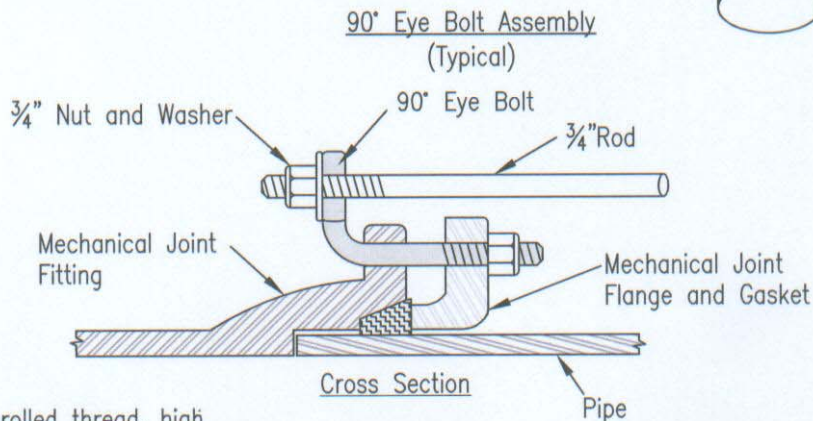


All bolts, rods and nuts shall be installed and torqued in accordance with the manufacturers' recommendations.

Nut and Washer: 3/4" heavy hex, high strength low alloy steel.



90° Eye Bolt
 Replaces tee bolt.
 Material: 3/4" Dia. UNC rolled thread, high strength, low alloy steel per AWWA C111.



	APPROVED	REVISIONS		ST. MARY'S COUNTY METROPOLITAN COMMISSION STANDARDS FOR PUBLIC WATER, SEWER AND INCIDENTAL STRUCTURES	
	 C. I. FREDERICK JR., P.E. CHIEF ENGINEER	DATE	INITIALS		TYPICAL METHOD FOR STRAPPING VALVE OR APPURTENANCE TO MAIN
		6/18/09	J.E.C.		
		DATE: 7/1/09			
			STANDARD NO. G-11		