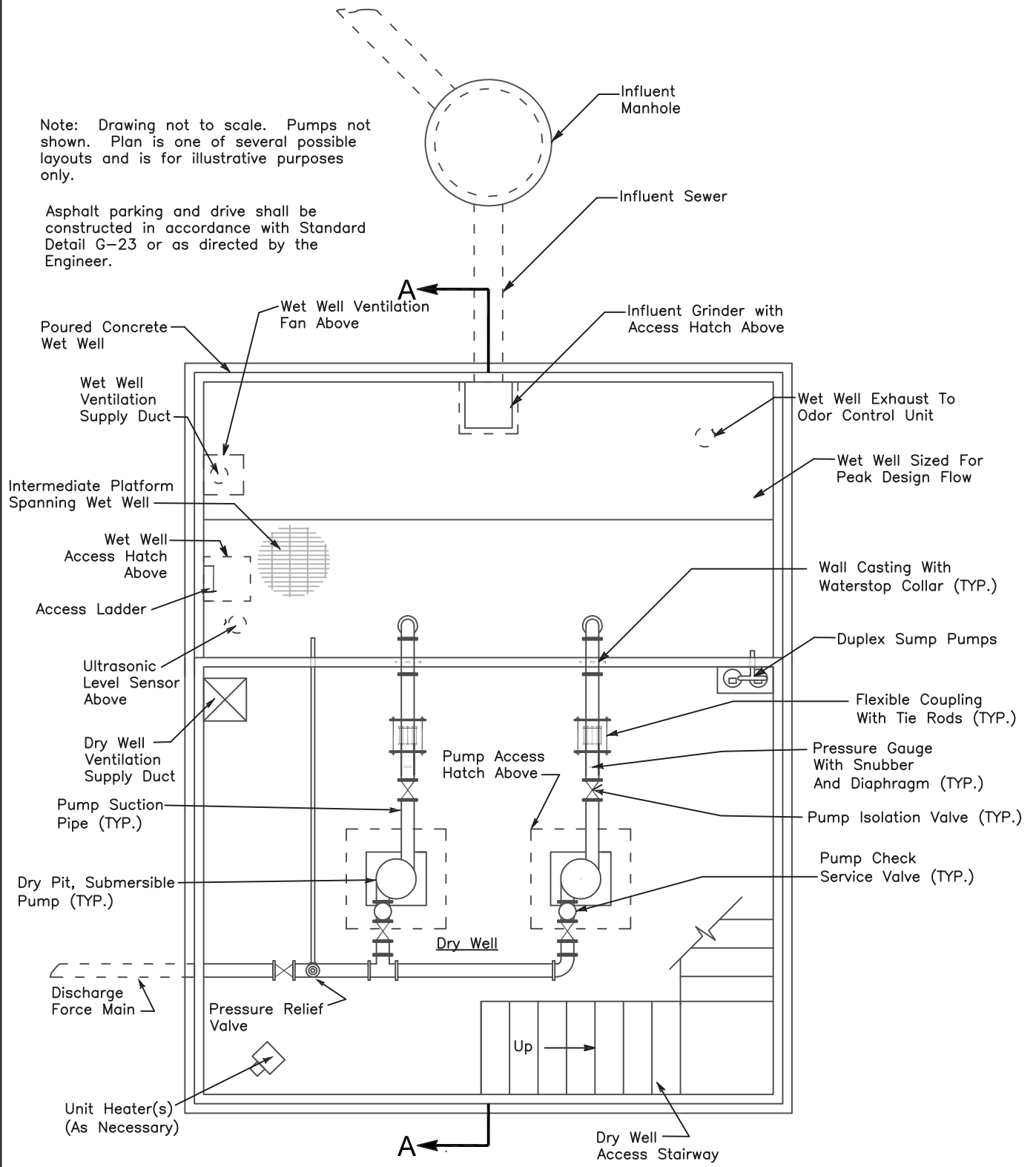


Note: Drawing not to scale. Pumps not shown. Plan is one of several possible layouts and is for illustrative purposes only.

Asphalt parking and drive shall be constructed in accordance with Standard Detail G-23 or as directed by the Engineer.



Note: Dry Well Minimum Size 14'X16'



APPROVED

M. C. Hollander

M. C. HOLLANDER, P.E.
CHIEF ENGINEER

DATE: 7/11/19

REVISIONS

DATE	INITIALS
6/18/09	J.E.C.
1/16/19	J.E.C.

ST. MARY'S COUNTY
METROPOLITAN COMMISSION
STANDARDS FOR PUBLIC WATER, SEWER
AND INCIDENTAL STRUCTURES

Wastewater Pumping Station
Wet Well and Dry Well Plan

STANDARD NO. PS-2