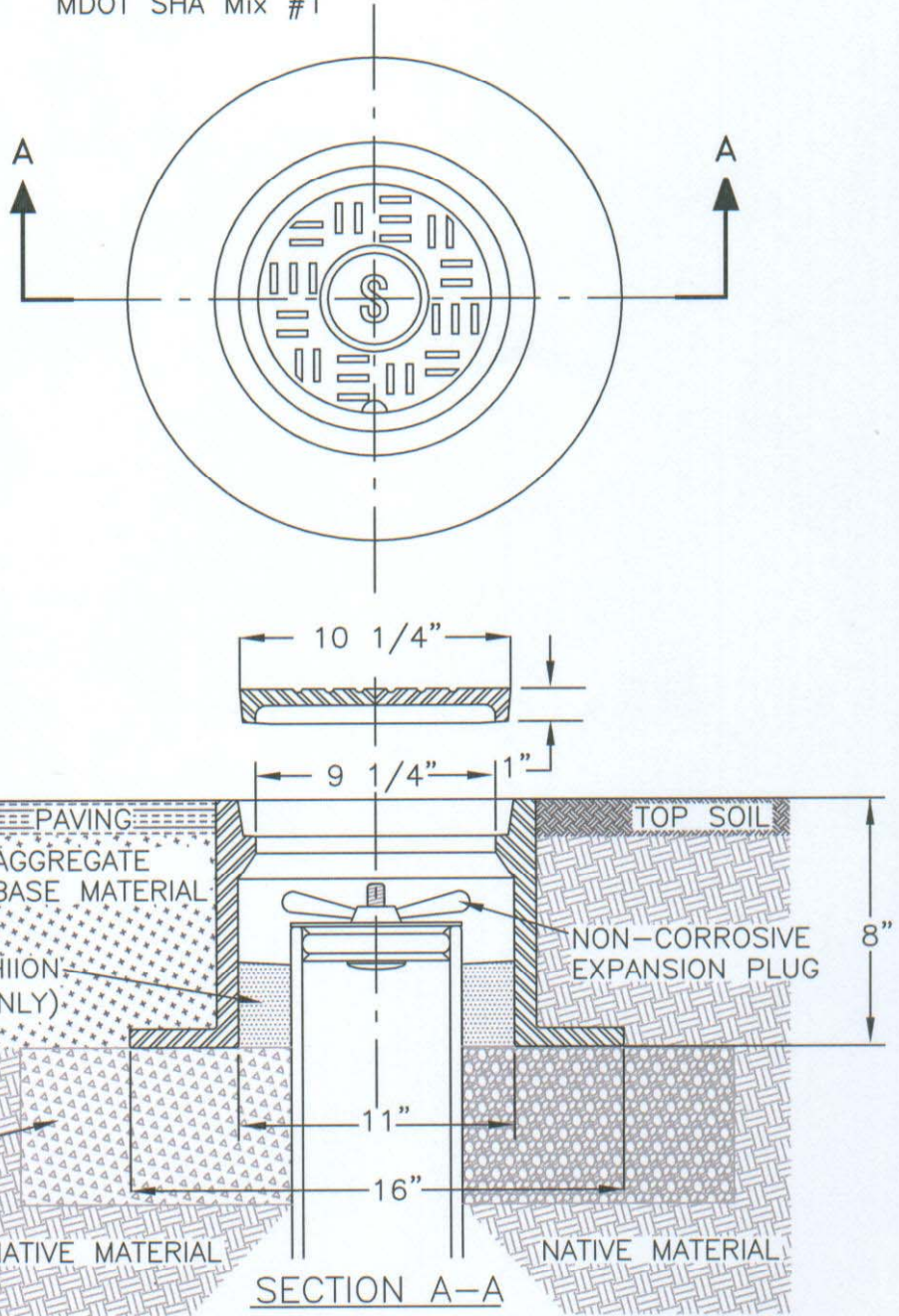


NOTES:

1. MATERIALS USED SHALL BE SIMILAR TO ASTM SPEC. A-48 CLASS 30 CAST IRON.
2. IN VEHICULAR TRAFFIC AREAS NOT PAVED, PROVIDE A 2'X2'X8" (H) SQUARE CONCRETE ENCASEMENT MDOT SHA Mix #1



20" DIAMETER
CONCRETE PAD FOR
PAVED AREAS
MDOT SHA MIX #1

SECTION A-A

	APPROVED	REVISIONS		ST. MARY'S COUNTY METROPOLITAN COMMISSION STANDARDS FOR PUBLIC WATER, SEWER AND INCIDENTAL STRUCTURES
	 C. I. FREDERICK JR., P.E. CHIEF ENGINEER	DATE	INITIALS	
	DATE: 7/1/09	6/18/09	J.E.C.	