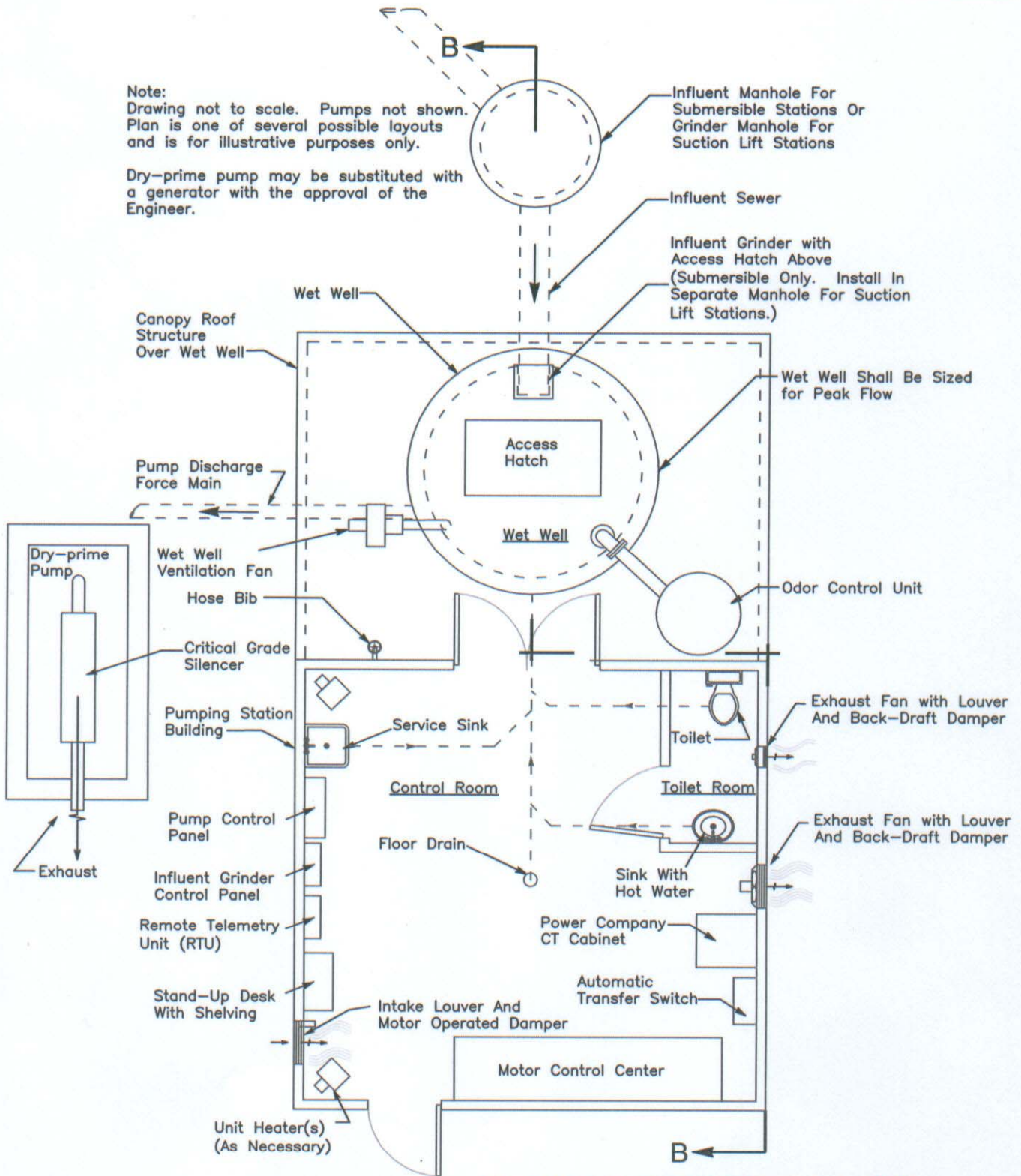
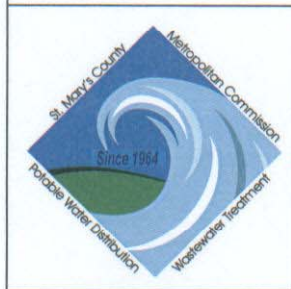


Note:  
 Drawing not to scale. Pumps not shown.  
 Plan is one of several possible layouts  
 and is for illustrative purposes only.

Dry-prime pump may be substituted with  
 a generator with the approval of the  
 Engineer.



Note: Pumping Station Building Minimum Size 12'x16'



**APPROVED**  
*af*  
 C. I. FREDERICK JR., P.E.  
 CHIEF ENGINEER  
 DATE: 7/1/09

| REVISIONS |          |
|-----------|----------|
| DATE      | INITIALS |
| 6/18/09   | J.E.C.   |
|           |          |
|           |          |

ST. MARY'S COUNTY  
 METROPOLITAN COMMISSION  
 STANDARDS FOR PUBLIC WATER, SEWER  
 AND INCIDENTAL STRUCTURES

Typical Plan For Suction Lift &  
 Submersible Wastewater  
 Pumping Stations

**STANDARD NO. PS-5**