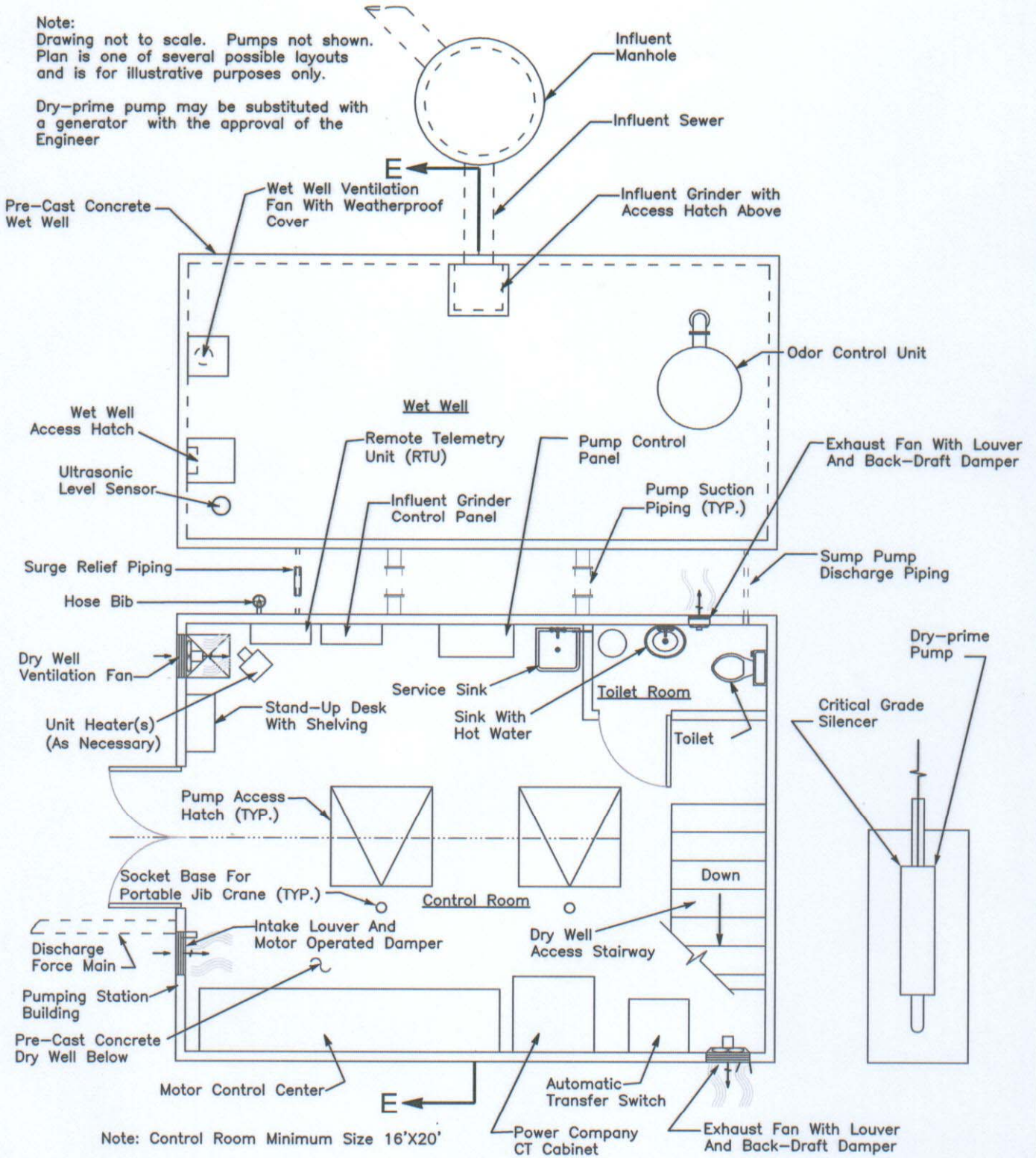


Note:
 Drawing not to scale. Pumps not shown.
 Plan is one of several possible layouts
 and is for illustrative purposes only.

Dry-prime pump may be substituted with
 a generator with the approval of the
 Engineer



Note: Control Room Minimum Size 16'X20'

	APPROVED	REVISIONS		ST. MARY'S COUNTY METROPOLITAN COMMISSION STANDARDS FOR PUBLIC WATER, SEWER AND INCIDENTAL STRUCTURES	
	 C. I. FREDERICK JR., P.E. CHIEF ENGINEER	DATE	INITIALS		Typical Plan For Package Wastewater Pumping Station
	DATE: 7/1/09	6/18/09	J.E.C.		
	STANDARD NO. PS-13				