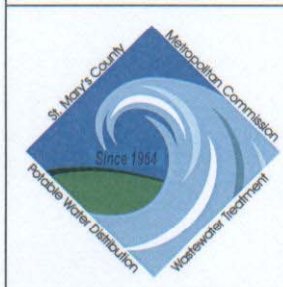
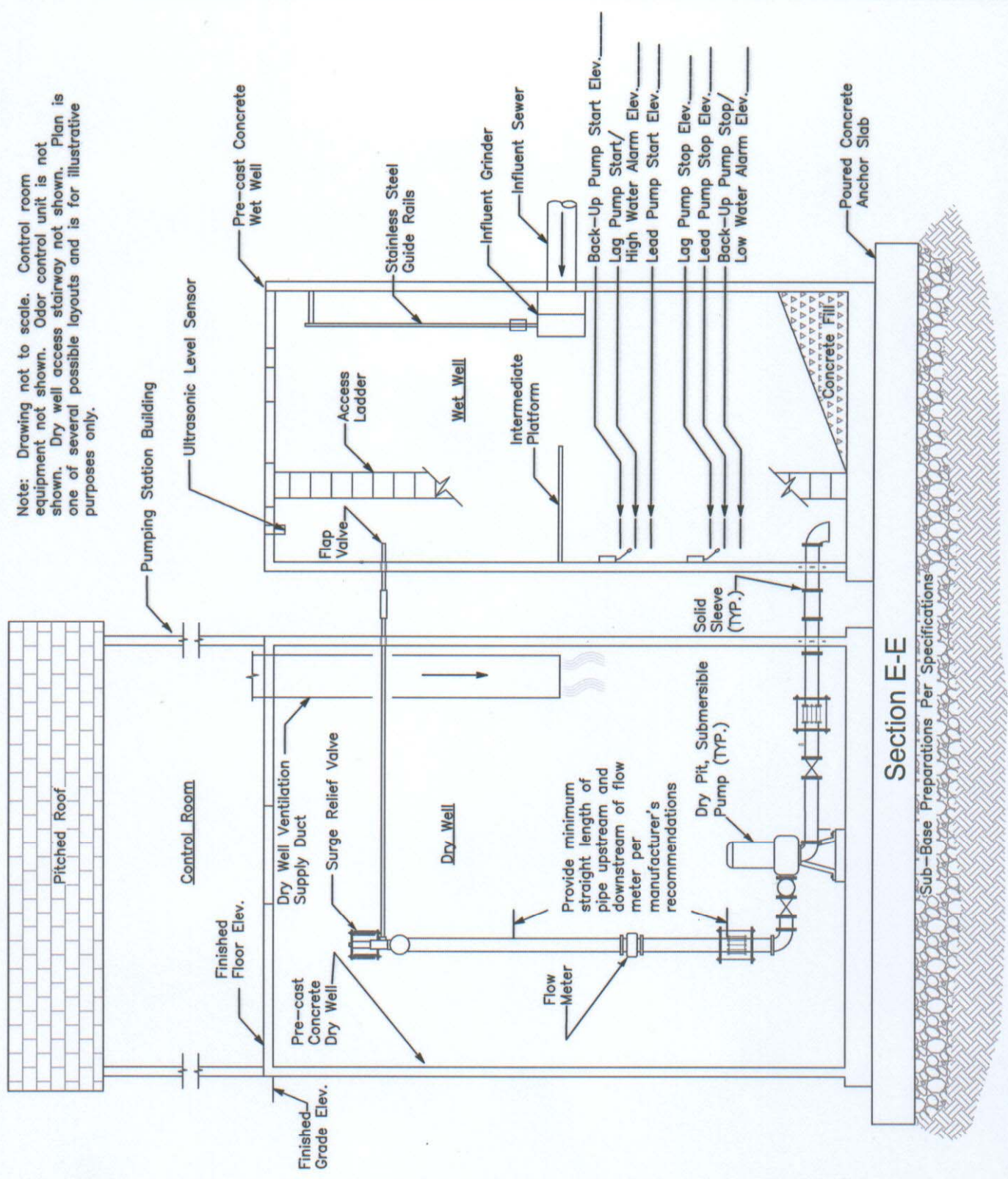


Note: Drawing not to scale. Control room equipment not shown. Odor control unit is not shown. Dry well access stairway not shown. Plan is one of several possible layouts and is for illustrative purposes only.



APPROVED

C.I.F.

C. I. FREDERICK JR., P.E.
CHIEF ENGINEER

DATE: 7/1/09

REVISIONS	
DATE	INITIALS
6/18/09	J.E.C.

ST. MARY'S COUNTY
METROPOLITAN COMMISSION
STANDARDS FOR PUBLIC WATER, SEWER
AND INCIDENTAL STRUCTURES

Package Wastewater Pumping Station
Wet Well and Dry Well Plan
Section E-E

STANDARD NO. PS-15